

ISSUE 4 • COVERING JANUARY 2024

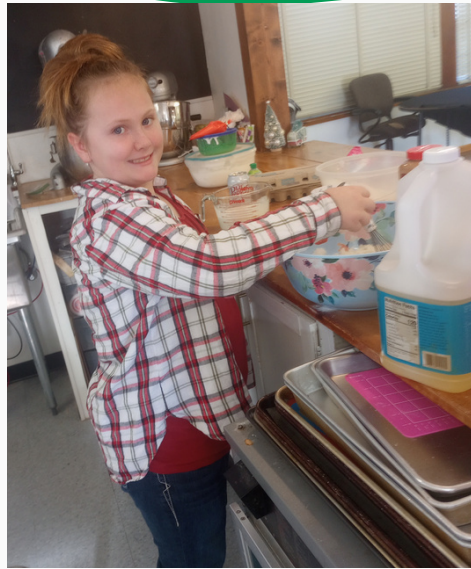
4-H UPDATES

Official Newsletter of Sumner County 4-H



4-H Club Day

Who's excited!!



February 24th is 4-H Club Day at the Raymond Frye Complex. Everyone should have received an email with pre-entry forms and basic information. But for newer members, you might be asking “what is 4-H Club Day?”. 4-H Club Day is an annual event that is designed to help 4-Her’s work on public speaking skills, public presentations, instrumentals, and more. 4-Her’s get to choose what categories they would like to compete in and then put together a talk, presentation, instrument solo or ensemble they would like to showcase. There are no required topics for any category. I would encourage first time participants or anyone struggling to pick a topic to find something you are passionate about and use that as a topic. It can be 4-H or non 4-H related. If you have any questions please reach out to a club leader or the Extension Office.

This issue:

Program Updates
PAGE 2

Program Updates
PAGE 3

Member Highlights
PAGE 4

Agent Notes
PAGE 5

Club News
PAGE 6

State Events
PAGE 7

Tips & Tricks
PAGE 8

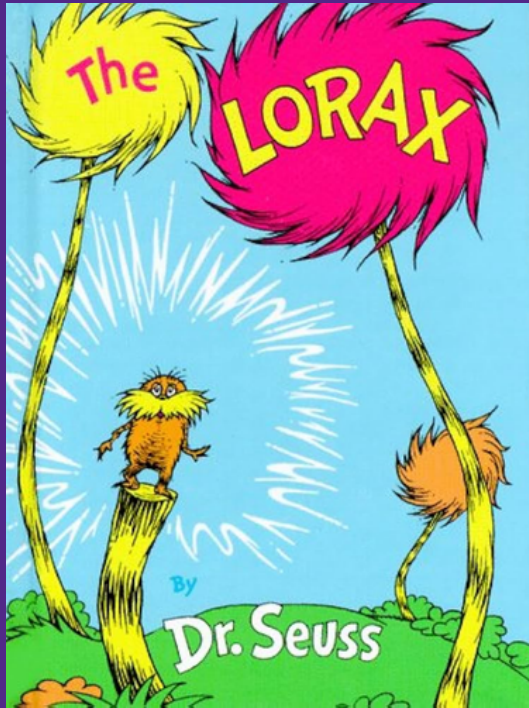
Looking Ahead
PAGE 8

Connect with Us
PAGE 9

Program News and Updates

"IF YOUR ACTIONS
INSPIRE OTHERS TO
DREAM MORE,
LEARN MORE, DO
MORE, AND
BECOME MORE, YOU
ARE A LEADER."

-JOHN QUINCY ADAMS



Sumner County Junior Leaders

Thank you to everyone who applied to be a Sumner County Junior Leader. Myself and our volunteers have reviewed the applications and have chosen who will be accepted. We are proud to announce that Kendall Baggs, Wyatt Harlan, Emma Volavka, Amberly Stone, Lorelei Stafford, and Michelle Tevington will be your 2024 Sumner County Junior Leaders.

Congratulations to those selected and we know you will work hard to "Make the Best Better" as Sumner County Junior Leaders.

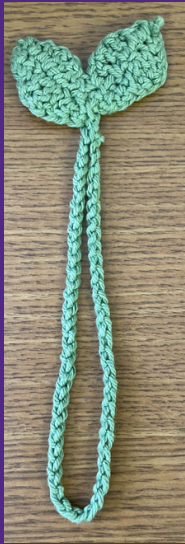


Read 4-H

Our next Reward Night will be held on the evening of February 19th 2024. The books you will need to read and submit book review forms for will be The Lorax by Dr. Seuss for the Junior readers. Senior readers will be reading Percy Jackson The Lightning Thief by Rick Riordan. Please have your forms filled out and submitted to the extension office by 5:00 pm on February 16th.

Just a reminder that the 4-Her who reads the most books and fills out a report form for each book will win a special prize!

Program News and Updates



HERE IS ONE EXAMPLE OF A PROJECT YOU COULD MAKE IN CROCHET CLASS. EMMA VOLAVKA MADE A CROCHET SPROUT BOOKMARK.

Crochet Class

Are you enrolled in fiber arts? Do you need a project to do for the fair? Do you want to sit and talk with your friends? Well then you should come and join in our crochet class.

Wellington community member Ernestine Frame is our wonderful project leader. She's been an avid crocheter for several years and loves to help others learn. We will be having semi-regular meetings throughout the year where 4-Her's will learn different stiches. Ultimately attendants will make one or more projects that could be entered in the 4-H fair. The next scheduled meeting will be at the Raymond Frye Complex on February 9th at 6:00 pm. If you would like to attend and have not attended a prior meeting, then be on the lookout for emails with registration information or contact the extension office.



Member Highlights

MEMBER HIGHLIGHTS IS A NEW PAGE I WILL BE STARTING IN THE NEWSLETTER. ON THIS PAGE I WANT TO HIGHLIGHT ONE OR MORE MEMBERS WHO HAVE DONE SOMETHING THAT IS WORTH RECOGNITION.

SO IF YOU SEE SOMEONE DOING SOMETHING COOL AND YOU THINK THEY DESERVE TO BE SHOUTED OUT ON THIS PAGE, THEN EMAIL THE OFFICE TO LET US KNOW.

WE WANT TO RECOGNIZE THOSE GOING ABOVE AND BEYOND FOR THEMSELVES AND THEIR COMMUNITIES.



For our first ever member highlight I wanted to choose someone who has done something I think is super cool. So this month we are highlighting Michelle Tevington of the Happy Hustlers 4-H Club.

This is Michelle's second year in 4-H and she's excited to meet new people and do more projects. The reason why she deserves recognition is that she is the first person in several years to go onto regional project report form judging. In Sumner County she was the winner for Fiber Arts and she qualified to send her project report forms to Fredonia, Ks. There they will be judged against other Fiber Arts winners from across the South East Region.

To move onto regional judging, Michelle worked hard to make changes to her project report forms. She took her critique sheet from local judging and made changes like the judge suggested. Additionally she had to create a cover letter and resume about her project.

For all of this hard work I wanted to recognize her and show off all of her hard work with preparing and sending her project report forms to regional judging.

Way to go Michelle!

Agent Notes



Involved is defined by Marriam-Webster as “actively participating in something” or “being affected or implicated”.

Speaking from experience, being involved in something is powerful and full of meaning. I’ve been involved with school clubs, sports, church groups, and of course 4-H. The same thing can be said about all of them, the more involved I was, the more I got out of each activity.

I know schedules are busy and you can’t be everywhere at once. I learned in college was that you can be involved in three activities and do them all well. Instead of doing every school sport and losing out on other opportunities, try picking just a few things to participate in. This way you can get involved in each while not overworking yourself. I would really encourage you to make one of them 4-H.

Why 4-H over a sport, school club or another opportunity? Well 4-H works to develop kids speaking abilities, confidence, leadership, and mindfulness of the importance of community. Sure, it might be more fun to dream of being the next Patrick Mahomes, but sadly not every kid will become him. But each of us can develop strong skills that will help us achieve our own dream. So my pitch is just to think of the goals each 4-Her has and pursue activities that will aid them in reaching their goals and bettering themselves. Hopefully one of those choices will continue to be 4-H.

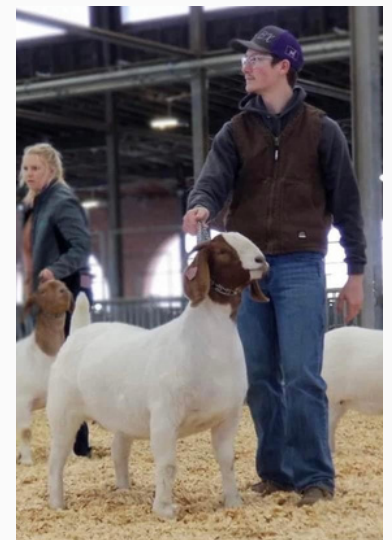
Side Notes

I really stand behind what I wrote about above in my main article. I fell like 4-H did more for me than any sport ever did. Not that I didn’t learn or enjoy sports. But the skills I developed through 4-H have carried me farther than any sport could have. Through developing my public speaking skills I earned a scholarship to attend Cowley Community College to judge livestock. Then I was able to go to K-State and land a job at a university farm. Eventually I helped lead that farm because of my hard work, communication, and leadership skills which I developed in 4-H. So when you have to choose between 4-H and another club, think about which will help you reach your goals and achieve your dreams.



Salutations

I HOPE EVERYONE IS
EXCITED FOR OUR 2024
4-H PROGRAM!



Here is your monthly goat photo. This is me and my breeding doe named Fancy. We are about to win a show in Sedalia Missouri in April 2023.

Club News

A place to highlight clubs and share ideas



Reporter's
Corner

Club News from
Sumner County



Buccaneers

In December the Buccaneers 4-H Club had a holiday party. There they decorated wooden nutcrackers, built gingerbread houses, and helped at the local food pantry.

Cardinals

Happy Hustlers

Due to inclement weather the Happy Hustlers did not meet in January

Redwing

Trailblazers

REGISTRATION OPEN!

State Events

Junior Producer Days

The Junior Producer Days are hosted annually by K-State. These events are focused on learning about one of the four main livestock show species. They are a mix of classroom sessions and hands on breakout groups. No matter what your skill or knowledge level is, these events are fun and beneficial for all. I would highly encourage anyone to go.

2024 K-STATE Junior SHEEP PRODUCER DAY MARCH 16

Join us for K-State Junior Sheep Producer Day on Saturday, March 16, 2024, in Weber Hall on the Kansas State University campus. Presentations and demonstrations will be provided by featured guests, as well as K-State faculty, staff, and students. This event will be a fun-filled, educational day of activities in which youth, parents, extension agents, and sheep project leaders can increase their knowledge of youth sheep project selection and management. Topics include project selection, nutrition and feeding, facilities, health, reproduction, meat science, wool, clipping and grooming, showmanship, and an optional YQCA certification at the end of the day. This event is designed for all ages and skill levels. Lunch is included. The registration fee is \$20/person for those who sign up by February 26, or \$25/person for those who register after that date. Only those who register by February 26 will receive a t-shirt. This is a family event! Anyone attending, including both youth and adults, must register.

SCAN ME!

Registration Deadline FEB. 26

Registration

Tentative Schedule

<p>8:30AM Check-in & Registration 9:30AM Welcome 9:45AM Project Selection 10:30AM Morning Breakout Sessions - Nutrition, Facilities & Equipment, Starter Flock NOON Lunch 12:45PM Health 1:30PM Afternoon Breakout Sessions - Wool, Showmanship, Clipping & Grooming 3:45PM Wrap-up & Dismissal 4:00PM YQCA Certification & State Livestock Nominations (optional)</p>	<p>Registration Deadline: February 26 Registration Fee: \$20/person Registration Link: http://bit.ly/ksuasregister Late Registration: \$25/person</p> <p>*All attendees must register, including youth & adults. **Late registrants will not receive a t-shirt. ***To register by mail, contact Lexie for a form.</p>
--	--

Questions
Lexie Hayes
785-532-1264
adhayes@ksu.edu

2024 K-STATE Junior BEEF PRODUCER DAY MARCH 2

Program
 Join us March 2, 2024, for the K-State Junior Beef Producer Day in Weber Arena on the Kansas State University campus. This event will be a fun-filled, educational day of activities in which youth, parents, beef project leaders, and extension agents can expand their knowledge of youth beef projects. Presentations and demonstrations by K-State faculty, staff, K-State livestock judging team members, and guest speakers will cover topics such as selection, nutrition, meat science, reproduction, health, grooming, and showmanship. An optional YQCA certification session will be offered at the end of the day. A complimentary lunch and t-shirt (early registrations) will be provided. The registration fee is \$20/person for those who sign up by February 12 and \$25 for those who register after the deadline. Only those who register by February 12 will receive a t-shirt. This is a family event! Anyone attending must register, including youth and adults.

Tentative Schedule

8:00AM	Check-in & Registration
9:30AM	Welcome
9:45AM	Project Selection
10:30AM	Morning Breakout Sessions - Nutrition, Meat Science, Daily Hair Care, Clipping & Fitting
NOON	Lunch
1:00PM	Afternoon Breakout Sessions - Health, Reproduction, Showmanship
3:15PM	Wrap-up & Dismissal
3:30PM	YQCA Certification & State Livestock Nominations (optional)

Registration
 Registration Deadline: February 12
 Registration Fee: \$20/person
 Registration Link: <http://bit.ly/ksuasregister>
 Late Registration: \$25/person after February 12

*All attendees must register, including youth & adults.
 **Late registrants will not receive a t-shirt.
 ***To register by mail, contact Lexie for a paper registration form.

Registration Due FEB. 12

Questions LEXIE HAYES
 785-532-1264 | ADHAYES@KSU.EDU

Scan Me!

YIP

Goats and Swine

Goat and swine folks, you might not see anything about a day for you. Do not fret! These events rotate species biannually. So this year (2024) is Sheep and Cattle and next year (2025) will be Goats and Swine.

4-H Council Meeting

FEBRUARY 26TH
@ 7:00 PM



Meeting Tips

PROPER GAVEL USAGE

ONE OF THE BEST PARTS OF BEING CLUB PRESIDENT IS GETTING TO USE A GAVEL. BUT IT IS AN IMPORTANT TOOL MORE THAN A TOY. THE BEST TIMES TO USE A GAVEL IS TO CALL A MEETING TO ORDER OR TO END IT.

A PRESIDENT MIGHT START A MEETING BY SAYING "I CALL THE REGULAR MONTHLY MEETING OF THE ___ 4-H CLUB TO ORDER (BANG GAVEL).

THIS HELPS GET THE AUDIENCES ATTENTION AND ALERTS EVERYONE TO QUIET DOWN.

ANOTHER TIME TO USE THE GAVEL IS WHEN PASSING MOTIONS.

ONCE A MOTION IS MADE, THE PRESIDENT WILL REPEAT IT BACK TO THE AUDIENCE SO EVERYONE CAN HEAR, "IT HAS BEEN FIRST AND SECONDED THAT..., ALL IN FAVOR SAY I, ALL OPPOSED SAME SIGN, MOTION PASSES/FAILS" (BANG GAVEL)

THE GAVEL DOES NOT NEED TO BE BANGED CONTINUOUSLY, IT IS A TOOL TO GET AND RETAIN PEOPLES ATTENTION AS WELL AS SIGNAL A DECISION HAS BEEN MADE.

Looking Ahead

February

- 7th; Shooting Sports Meeting @ 6:00 pm @ RFC
- 12th; 4-H Club Day Pre-entries due by 5:00 pm to the Extension Office
- 16th; Read 4-H forms due @ 5:00 pm @ RFC
- 19th; Read 4-H Reward Night @ 6:00 pm @ RFC
- 19th; Office closed for President's Day
- 21st; Shooting Sports Meeting @ 6:00 pm @ RFC
- 24th; 4-H Club Day @ RFC
- 26th; 4-H Council @ 7:00 pm @ RFC

March

- 6th; Shooting Sports Meeting @ 6:00 pm @ RFC
- 20th; Shooting Sports Meeting @ 6:00 pm @ RFC

State Level events

March

- 2nd; KSU Junior Beef Producer Day @ Manhattan
- 16th; KSU Junior Sheep Producer Day @ Manhattan





K-STATE

Research and Extension

Sumner County

Connect with us on



Kansas State University Agricultural Experiment Station and Cooperative Extension Service

Kansas State Research and Extension is an equal opportunity provider and employer.

Accommodations:

K-State Research and Extension is committed to providing equal opportunity for participation in all programs, services and activities. Program information may be available in languages other than English. Reasonable accommodations for persons with disabilities, including alternative means for communication (e.g., Braille, large print, audio tape, and American Sign Language) may be requested by contacting the event contact K-State Research & Extension - Sumner County two weeks prior to the start of the event at 620-326-7477 or sucoext@gmail.com. Requests received after this date will be honored when it is feasible to do so. Language access services, such as interpretation or translation of vital information will be provided free of charge to limited English proficient individuals upon request.

Sumner County Office

320 N. Jefferson Ave
Wellington, KS 67152

620-623-7477